

From: [IPNIG Executive](#)
To: [IPNIG Member](#)
Subject: IPNIG AGM - Thursday, November 21, 2013 at 7:30 pm
Date: November-14-13 6:16:07 PM

Dear IPNIG Member,

This is a notification to IPNIG members of a change in the AGM date to Thursday, November 21, 2013 at 7:30 pm.

IPNIG members can join the IPNIG AGM from the comfort of their own home using Bell conferencing. Read the AGM [agenda posted on line](#) and **register today**. [IPNIG Upcoming Events](#)

IPNIG spent the past year asking the public community, local and federal politicians, lobbyists, health care system administrators, hospital CEOs and nursing colleagues, "Do you know where independent private practice nurses work and what nursing services they provide?" [Member Voices May-September 2013](#)

Their responses indicated the public had very limited knowledge that Registered Nurses work in private practice utilizing extensive specialized nursing care skills providing a huge diversity of health care services. Who are Independent Practice Nurses? Where do they Work? [... click here](#)

Members need to view the updated IPNIG web site "bulletin board" to familiarize yourself with the wealth of pertinent researched information for answers to your questions and help you develop your self-employed nursing practice.

Professional Practice

Share your scope of practice as a self employed Registered Nurse working in "*direct patient care, education, research, administration or consultation*" [... click here](#)

Research

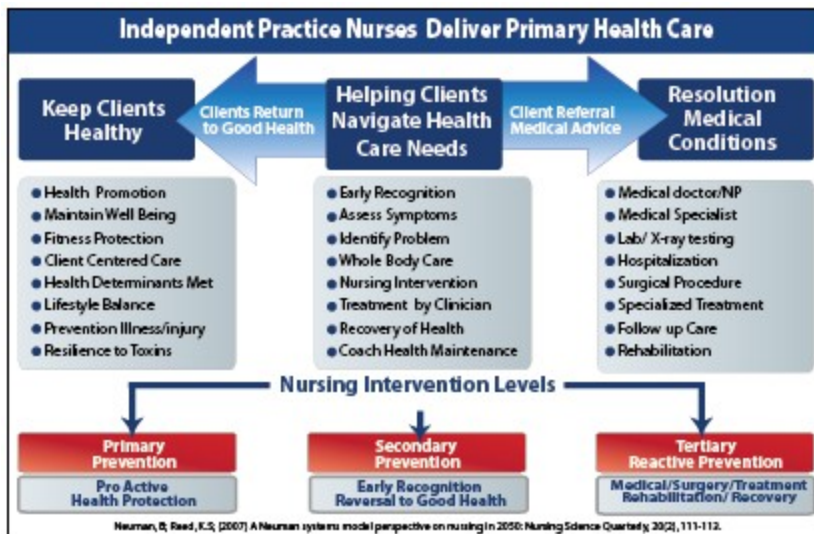
Best Practice Guidelines tool kit for assessing your nursing practice [... more](#)

Education

IPNIG Business Start Up BPG Checklist for a Self- Employed Nurse [... more](#)

Policy and Practice

View the *new* marketing image [... view here](#)



See the Levels of Prevention of Primary Health Care nursing services delivered by Independent Practice Nurses ... [click here](#)

Member Services

Read the "open letter" to members of the *new* benefits including mandatory Professional Liability Protection Insurance. ... [Open letter](#)

Support IPNIG from the comfort of your own desk - Guideline for Volunteers ... [more](#)

IPNIG encourages all members to participate in our 2014 activities that promote the recognition of Independent Practice Nurses delivering Primary health Care client centered care in the community.

On behalf of all the IPNIG executives members,

Thank you for your continuing support,

Lynne Browning
IPNIG Chairperson

Ruth Volpato — Political Action/Public Policy
Ruth Ruttan — Professional Practice/BPG
Jill King — Communication/Membership
Jana Bartley — Public Relations
Arnie Alice — Research/Education
Jennifer Desmond — Networking/Meet-ups